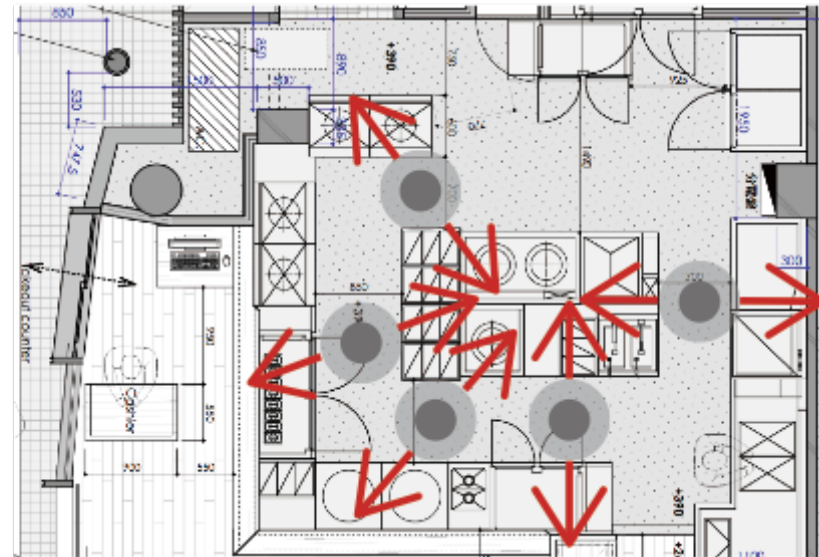
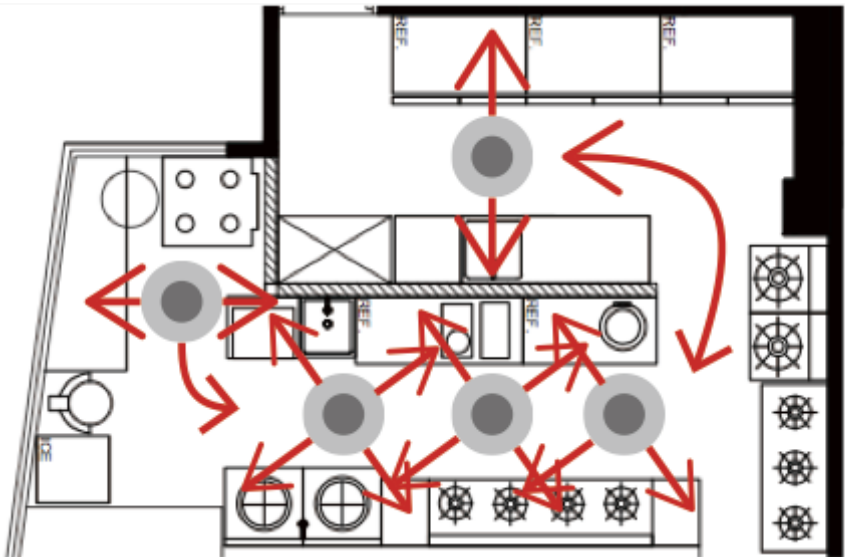


The logo for iCHEF features a stylized lowercase 'i' on the left. The dot of the 'i' is a solid grey horizontal bar. The stem of the 'i' is a vertical bar composed of five stacked, equal-width horizontal segments in the following colors from top to bottom: light green, orange, yellow, light orange, and purple.

iCHEF





Before



After

But

Slow

Heavy

Bottle
-Neck

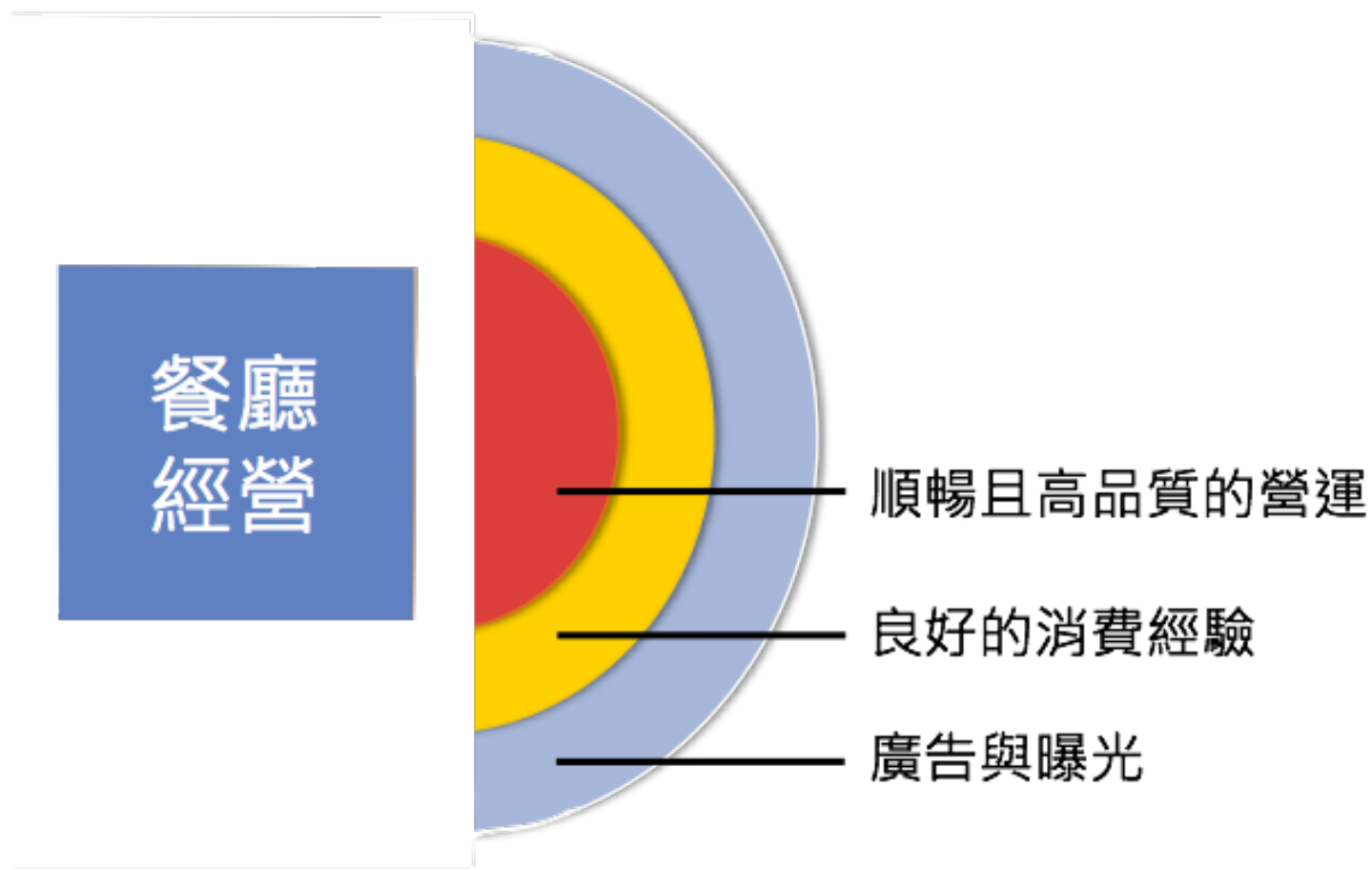




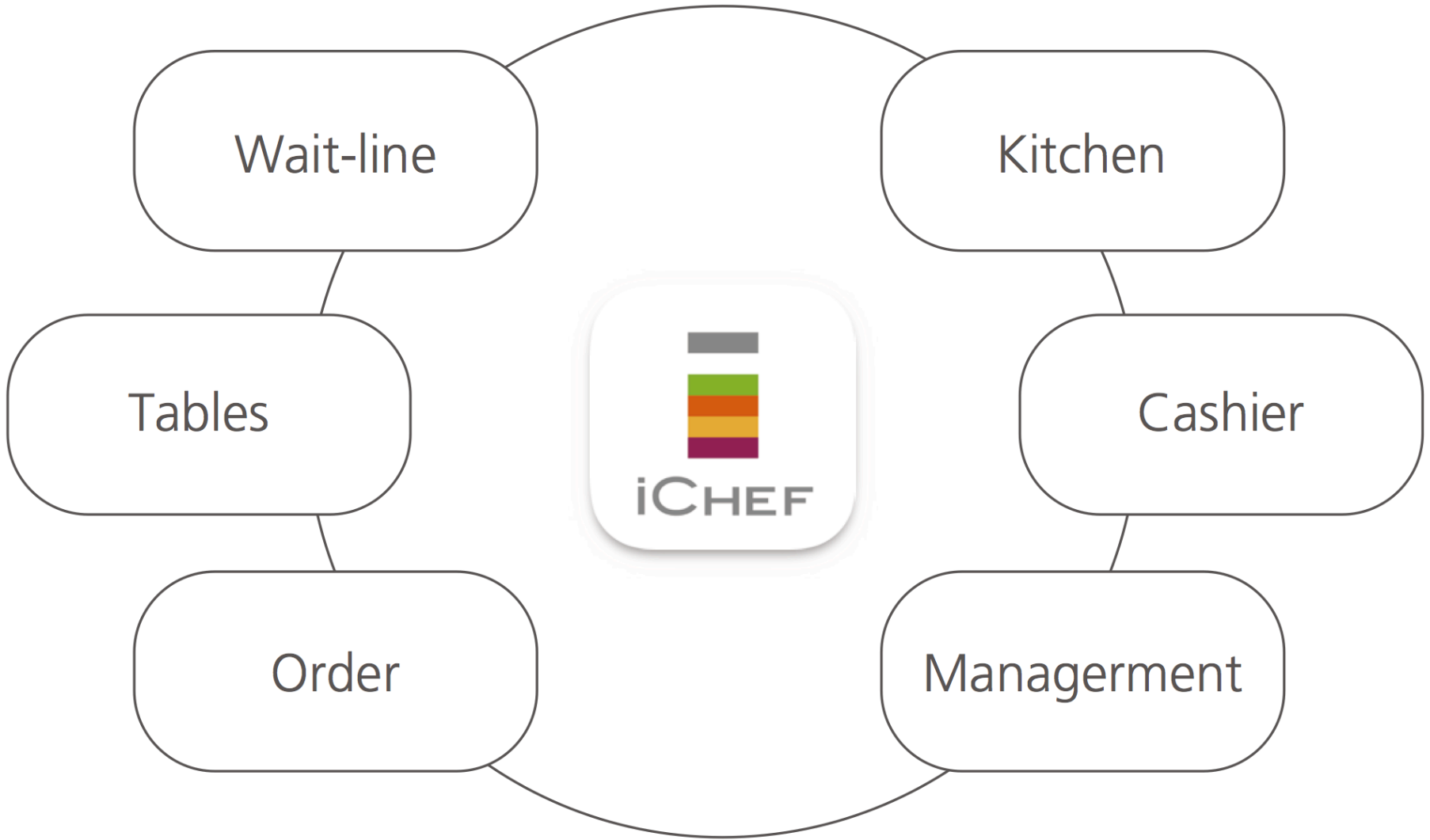


餐廳的經營靠熟客

重點維持營運品質並創造消費經驗







Wait-line

Kitchen

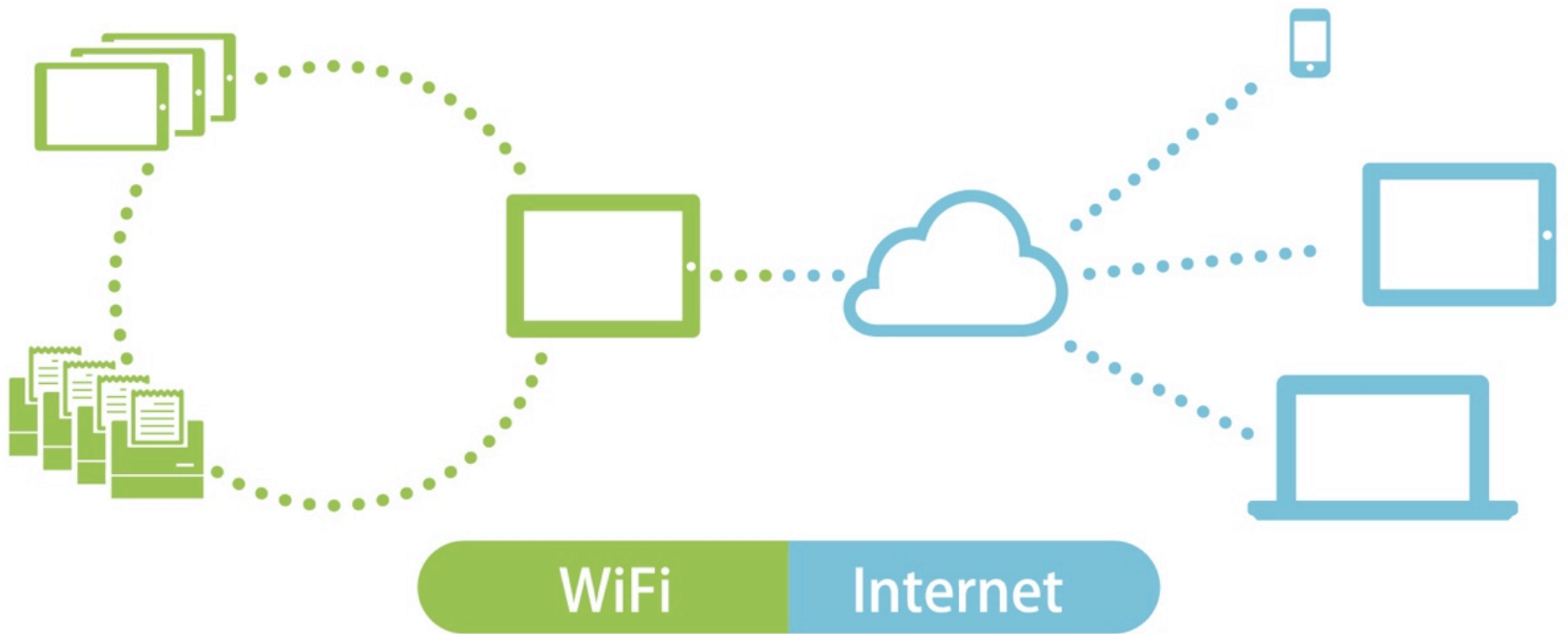
Tables

Cashier

iCHEF

Order

Management





 iCHEF

Designed by Restaurant
for Restaurants,
a Smarter POS

Efficient

Stylish

Flexible

Intelligent



NT\$ 1,950 /月

單台iPad馬上開始
第二台起每台 +NT\$500 /月

貼心導入

- 導入前到店諮詢
- 代為設定菜單
- 硬體規劃與安裝
- 導入服務教學

技術支援

- 0800電話支援服務
- 線上操作教學與設定協助
- 簡易故障排除協助

4hr 急修

- 大都會區四小時內到修
- 到店故障排除與硬體維修
- 免費七天備機租借

A blue circle with a white border containing the text '300+' in white. The circle is positioned on the left side of the image.

300+

Stores

A red circle with a white border containing the text '50M+' in white. The circle is positioned on the right side of the image.

50M+

Transactions

**No.1 POS App
In HK and Taiwan**



"Best Startup"

Taiwan 2013, Business Next

"Most-Promising Startup"

Echelon Japan 2014, e27



"Outstanding e-Invoice Contributor"

Minister of Finance of Taiwan, 2013

GREE Ventures



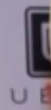
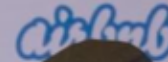
PROGRESS

OFFICIAL PARTNERS

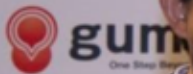
ACCOMODATION

TRANSPORT

BROADCAST



ED BY



FUJI TELEVISION NETWORK



OPTUS INNOV8 SEED



KICKSTART



SINGAPORE EXHIBITION BUREAU

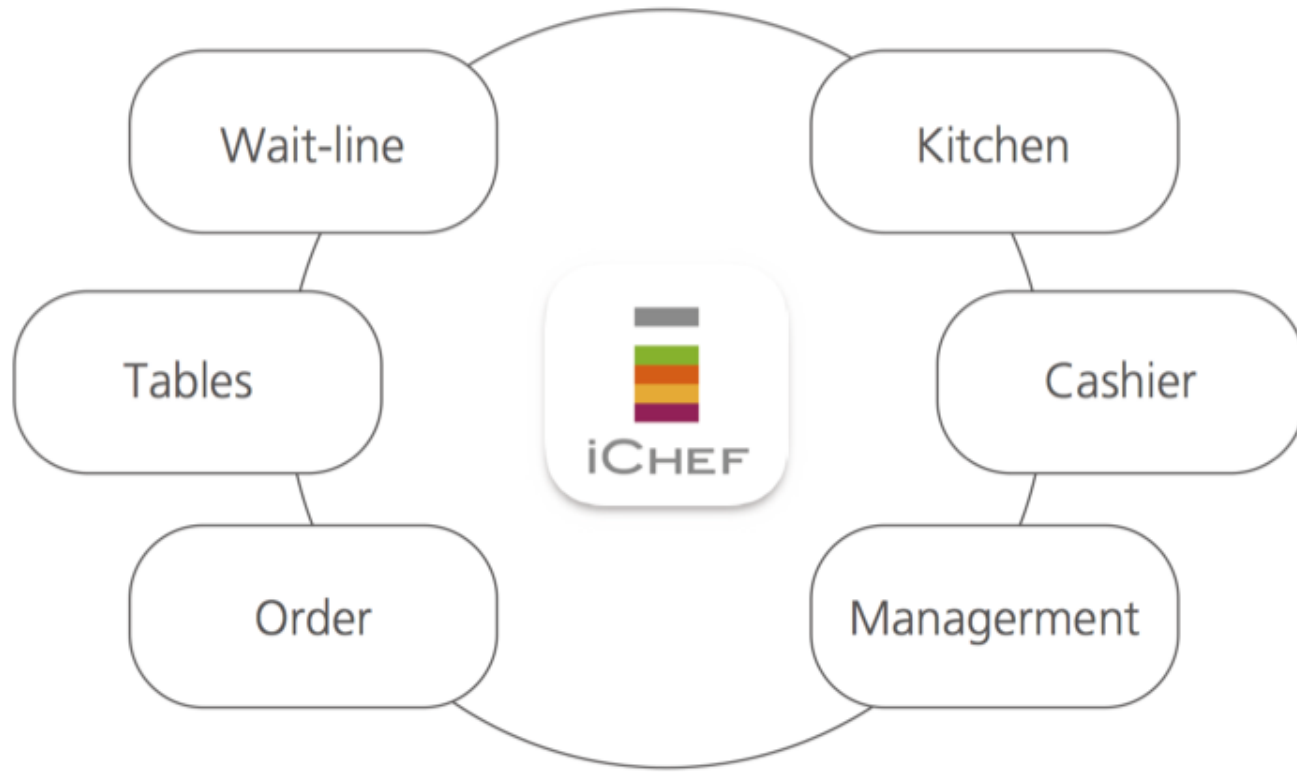


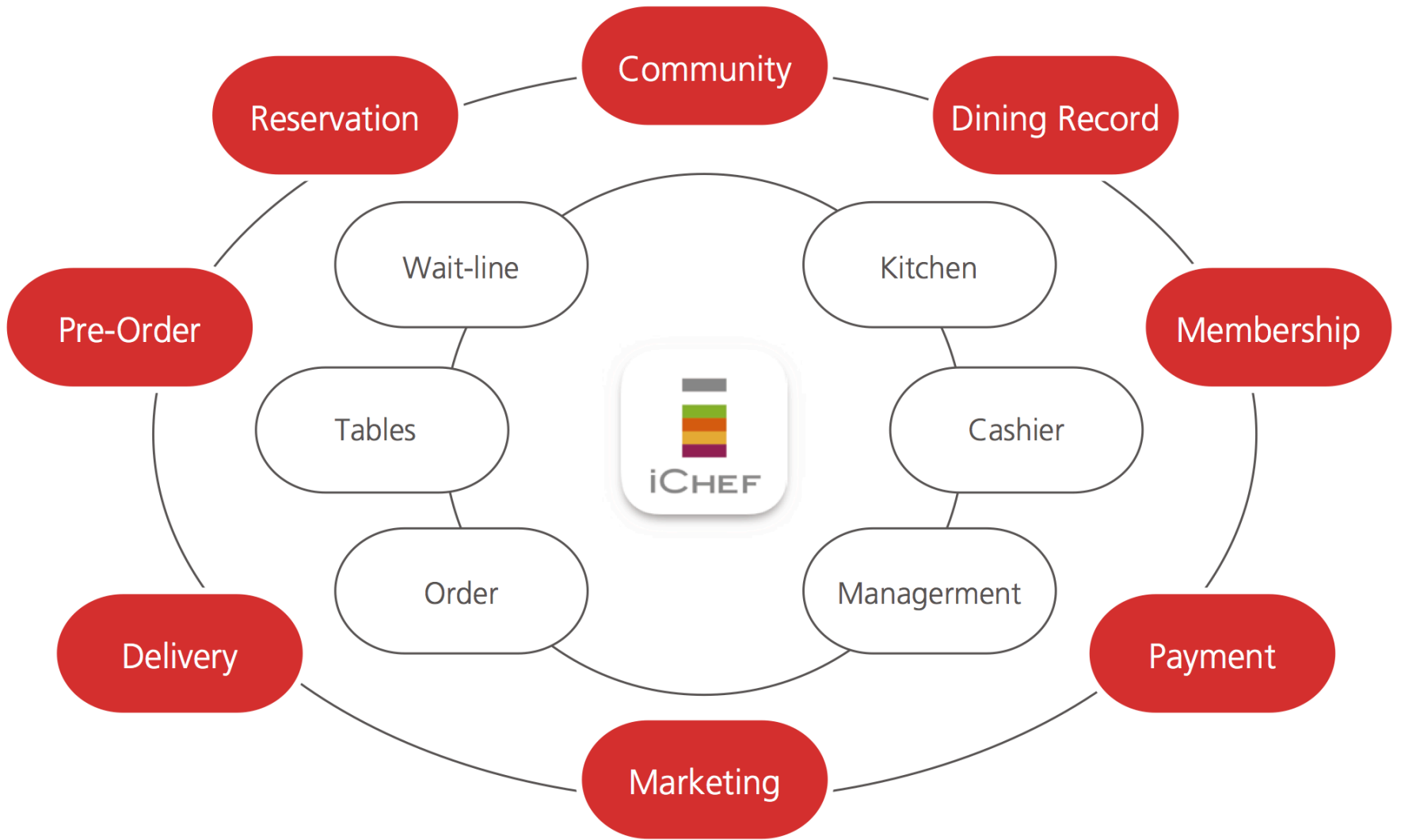
innov8
ECHELON™
SPEAKER
Masahiko Yamamoto
Master Chef
President of KICKSTART













Make
Opening Restaurant
a Better Business



 iCHEF